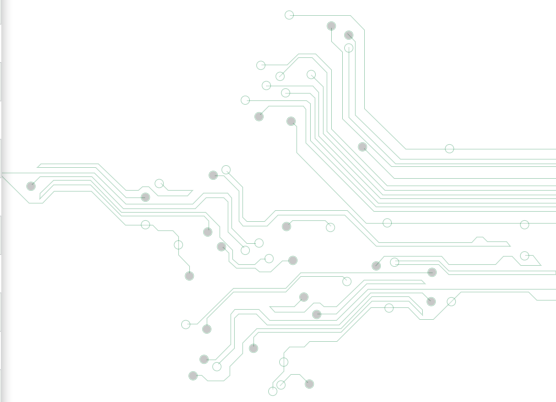




## About this guide

This guide provides an overview of the Littelfuse technologies used in various building and home automation applications. It is designed to help you quickly find circuit protection, power control, and sensing solutions appropriate to your application.

Topic	Page
Smart Lock	<a href="#">2</a>
Door and Window Sensing	<a href="#">3</a>
Garage Door	<a href="#">4</a>
Video Doorbell	<a href="#">5</a>
Outdoor Security Camera	<a href="#">6</a>
Wireless Security Camera	<a href="#">7</a>
USB Outlet	<a href="#">8</a>
GFCI/AFCI Receptacle	<a href="#">9</a>
Intelligent Outlet	<a href="#">10</a>
Electronic Dimmer	<a href="#">11</a>
Electric Meter	<a href="#">12</a>
Gas and Water Meter	<a href="#">13</a>
Fire and Smoke Alarm	<a href="#">14</a>
Smart Thermostat	<a href="#">15</a>
HVAC – Control Unit and Drive System	<a href="#">16 – 17</a>
Elevator/Escalator Drive System	<a href="#">18</a>
Elevator Cabin Solutions	<a href="#">19</a>
Intelligent Appliances	<a href="#">20</a>



Specifications, descriptions, and illustrative material in this literature are as accurate as known at the time of publication but are subject to changes without notice. Visit [littelfuse.com](http://littelfuse.com) for more information.